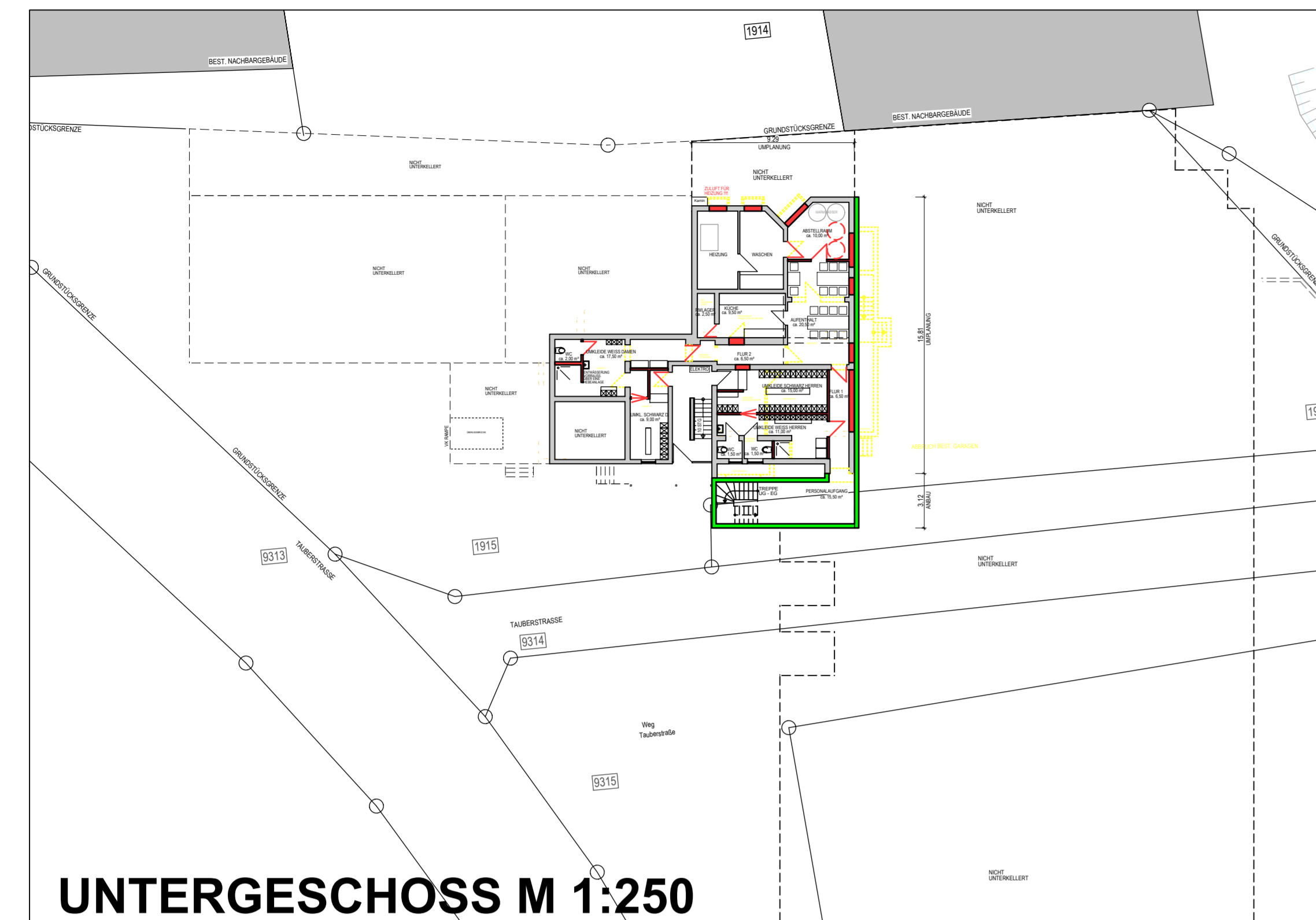


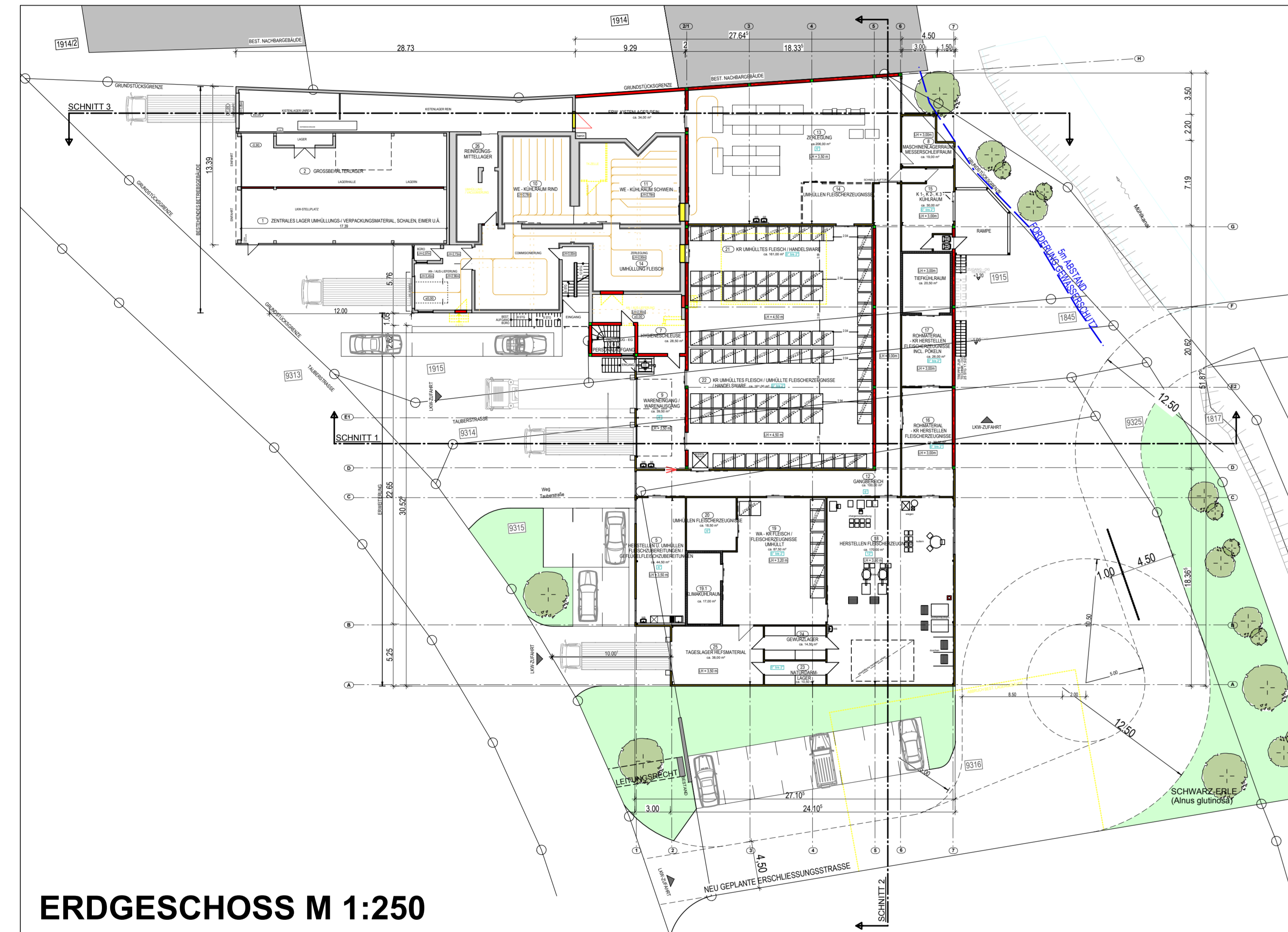
# VORHABENBEZOGENER BEBAUUNGSPLAN

## "ZERLEGE BETRIEB TAUBERSTRASSE"

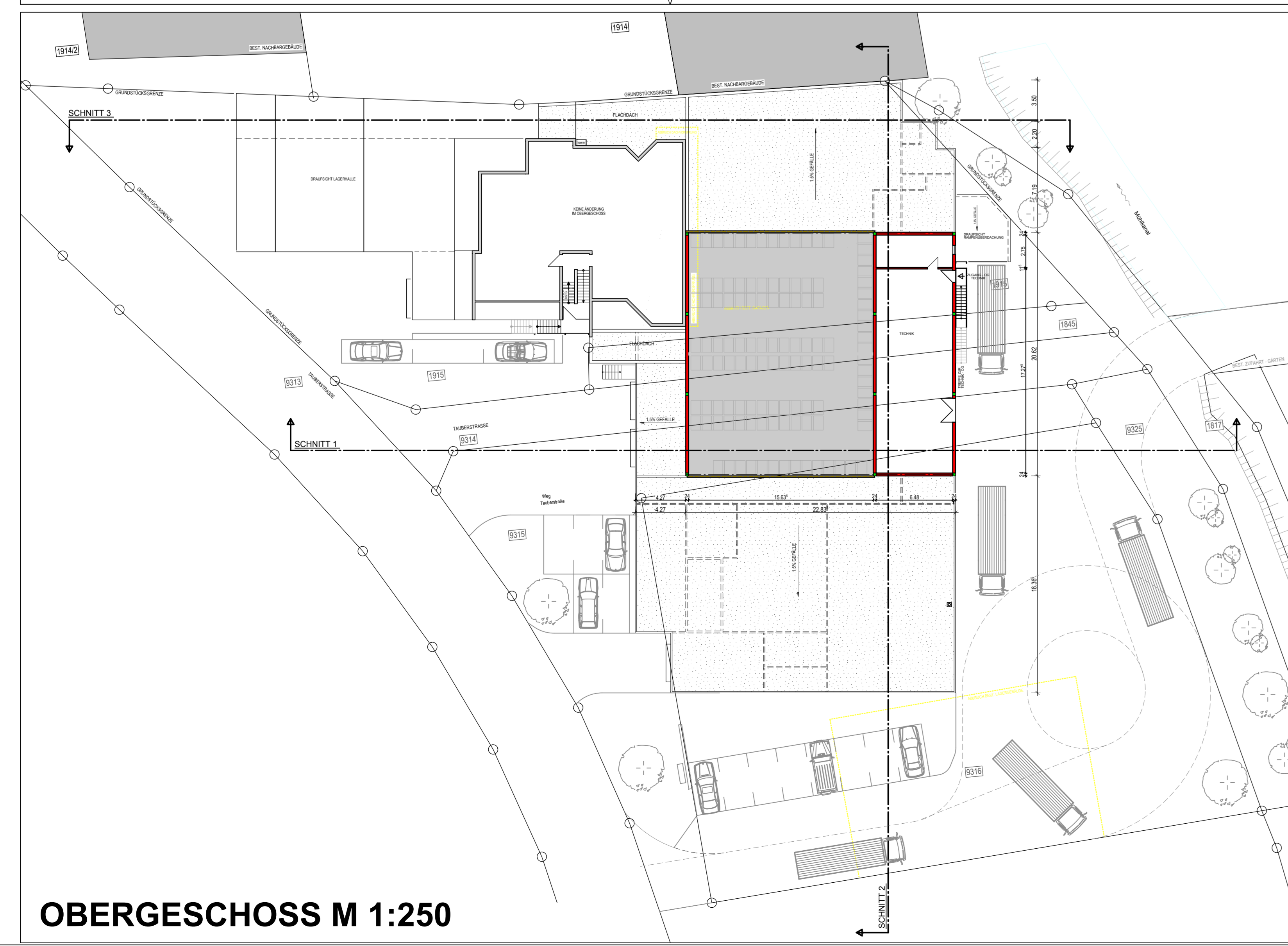
- PLANZEICHNUNG M 1 : 250 ( TEIL C ) -



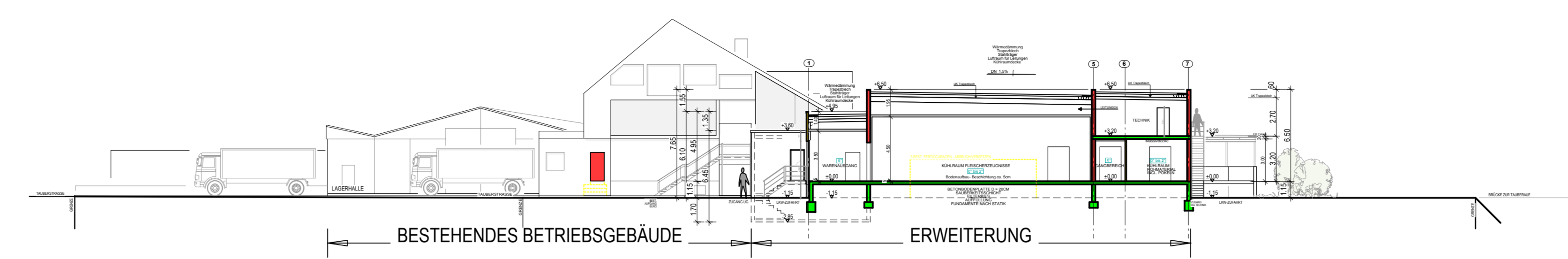
UNTERGESCHOSS M 1:250



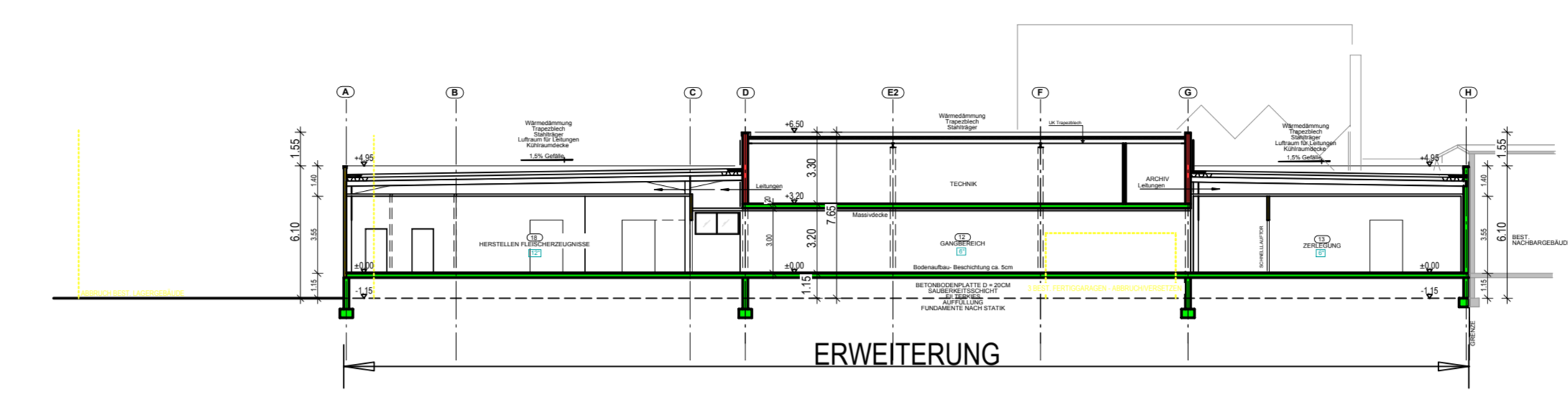
ERDGESCHOSS M 1:250



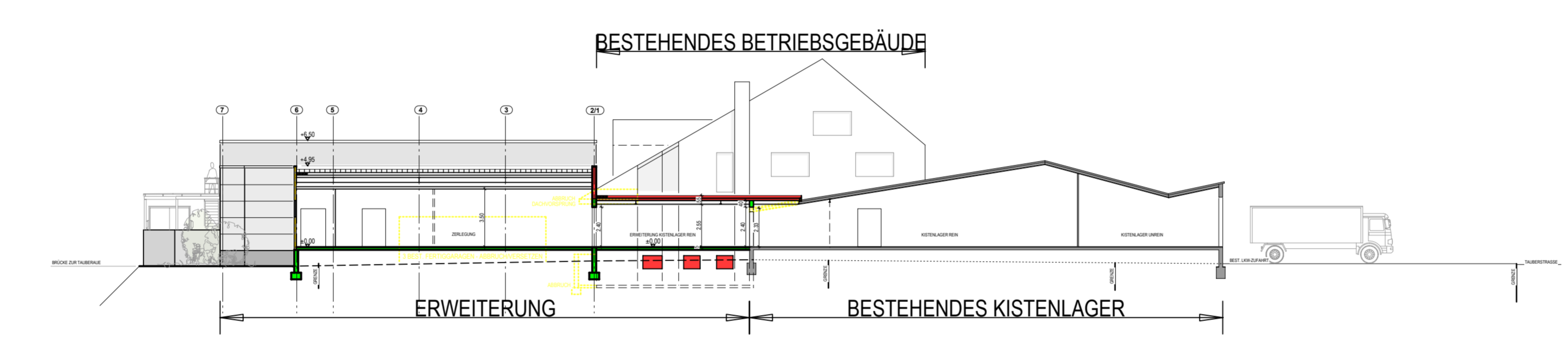
OBERGESCHOSS M 1:250



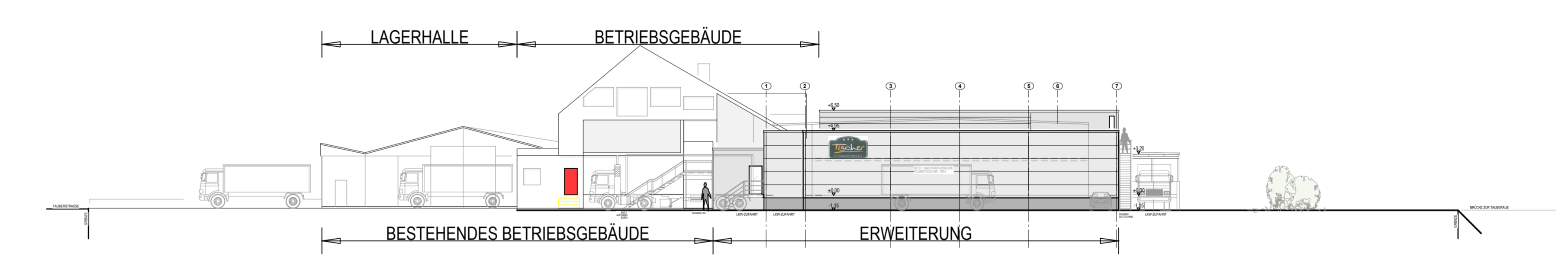
SCHNITT 1 - 1



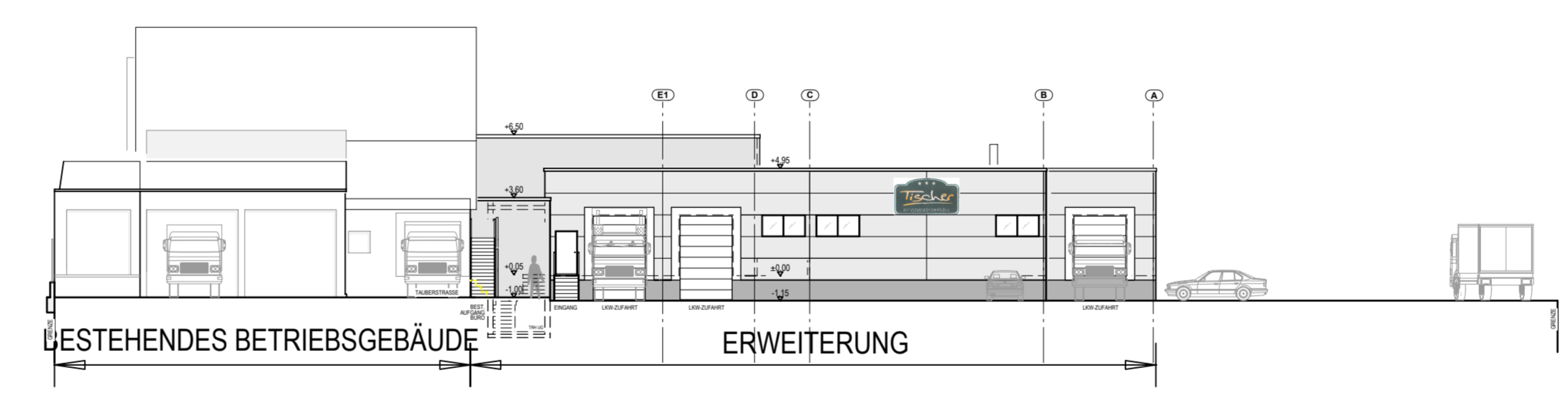
SCHNITT 2 - 2



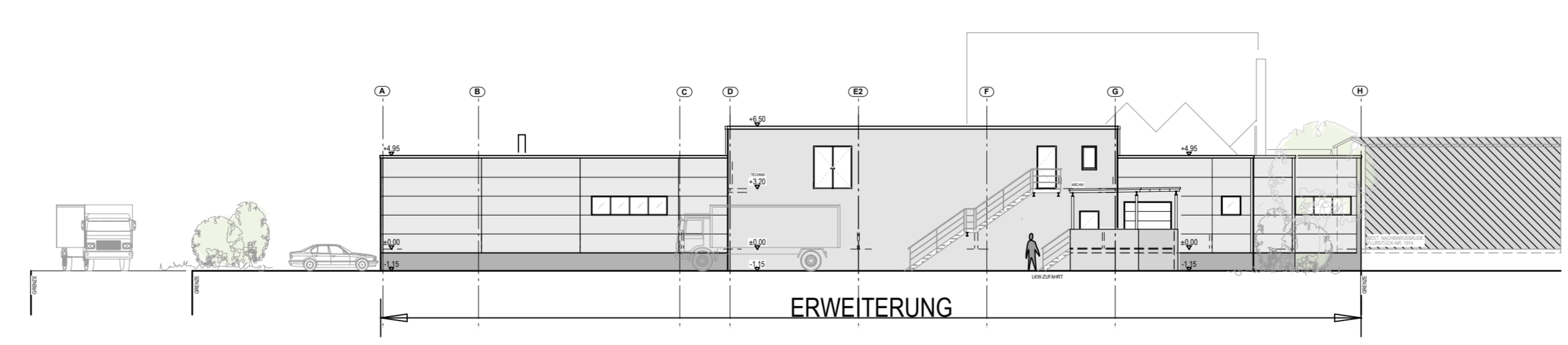
SCHNITT 3 - 3



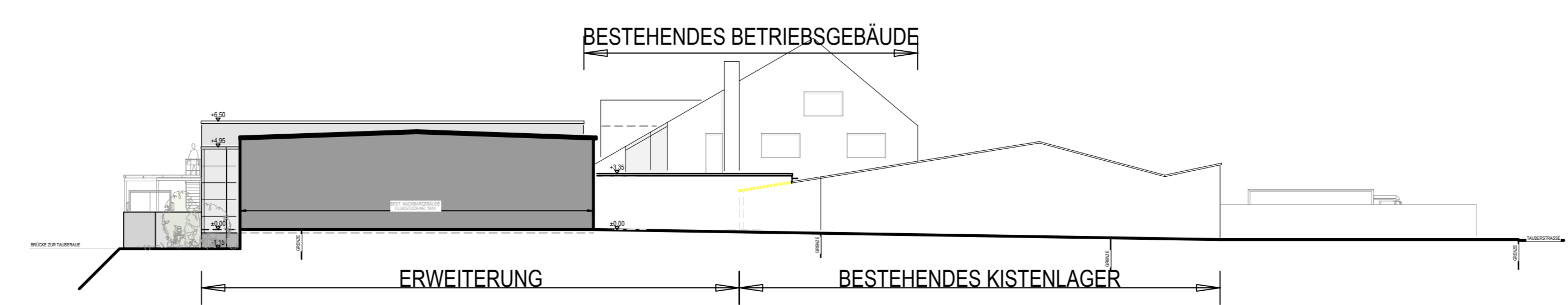
SÜD-OSTEN



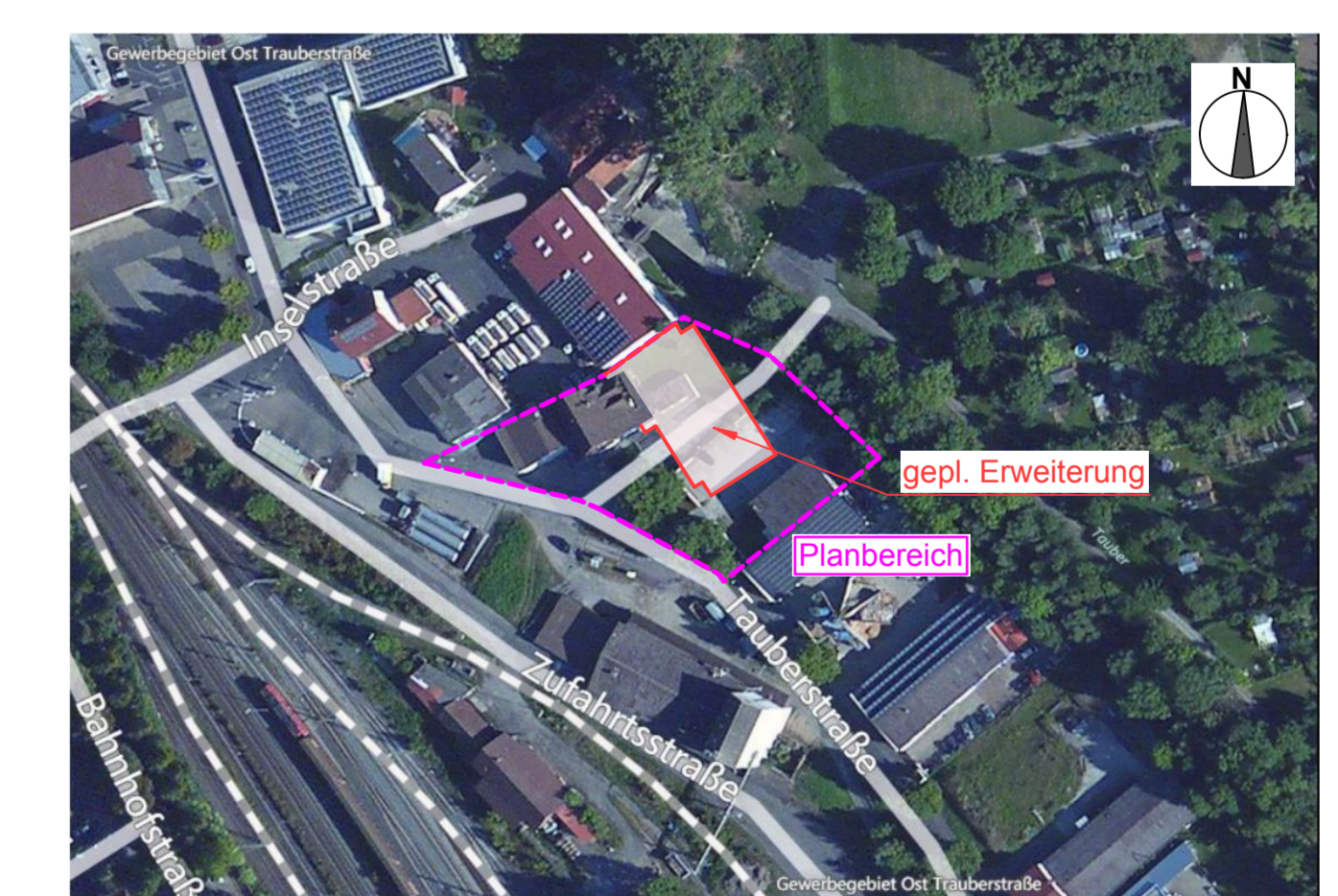
SÜD-WESTEN



NORD-OSTEN



NORD-WESTEN



Vorhabenbezogener Bebauungsplan

"Zerlegebetrieb Tauberstraße"  
Main-Tauber-Kreis

VORHABENPLAN ( TEIL C )

Vorhabenträger: Rainer und Thomas Tischer,  
Tauberstraße 15, 97922 Lauda-Königshofen

GRUNDRISSSE, SCHNITTE, ANSICHTEN M 1:250 STAND 04.03.2014  
ERGÄNZUNG 20.02.2014

Rüger und Tröger Architekten,  
Pestalozzallee 13/15, 97941 Tauberbischofsheim  
Bahnhofstraße 21, 97877 Wertheim  
Tel.: 09341/4034  
info-tbb@rueger-troeger.de  
Tel.: 09342/2119  
info-wertheim@rueger-troeger.de